

Le radiateur Net modifie la géométrie du profil des tubes horizontaux. La forme rectangulaire donne à ce sèche-serviettes une forte personnalité qui confère à votre salle de bains une réelle valeur ajoutée.



Net, hauteur 1760 mm, largeur 500 mm, Purple Blue

Construction features

radiateur en acier avec tubes rectangulaires 20x25 mm bizotés et collecteurs ronds Ø 30 mm
raccordement hydraulique 1/2" standard ou central 50 mm, autres raccords disponibles
pression maximale de service 4 bars
température maximale de service 95°C
garantie 2 ans

Standard equipment

système de fixation murale dans la finition du radiateur
purgeur
emballage intégrant une protection anti-choc et anti-rayures

Certifications



Plus



Données techniques

Model	Deph (mm)	Height (mm)	Width (mm)	Conn. C. (mm)	Weighth (kg)	Capacity (lt)	Δt=50°C (Watt)	Δt=40°C (Watt)	Δt=30°C (Watt)	Δt=20°C (Watt)	Exponent	mixed oper. (Watt)
800 18 tubes 1 espace	62,0	800	500	470	4,60	7,70	447,0	340,0	239,0	145,0	1,230	400
800 18 tubes 1 espace	62,0	800	600	570	5,30	9,00	538,0	412,0	293,0	180,0	1,192	400
800 18 tubes 1 espace	62,0	800	750	720	6,40	10,90	674,0	518,0	370,0	229,0	1,176	700
1200 26 tubes 2 espaces	62,0	1200	500	470	6,70	11,20	660,0	504,0	355,0	218,0	1,211	700
1200 26 tubes 2 espaces	62,0	1200	600	570	7,80	13,00	786,0	602,0	426,0	263,0	1,197	700
1200 26 tubes 2 espaces	62,0	1200	750	720	9,30	15,80	975,0	750,0	535,0	332,0	1,175	1000
1440 32 tubes 2 espaces	62,0	1440	500	470	8,20	13,70	783,0	597,0	421,0	257,0	1,216	700
1440 32 tubes 2 espaces	62,0	1440	600	570	9,50	15,90	930,0	712,0	504,0	310,0	1,200	1000
1440 32 tubes 2 espaces	62,0	1440	750	720	11,40	19,30	1.150,0	885,0	631,0	392,0	1,175	1000
1760 38 tubes 3 espaces	62,0	1760	500	470	9,80	16,40	942,0	718,0	507,0	310,0	1,214	1000
1760 38 tubes 3 espaces	62,0	1760	600	570	11,30	19,00	1.116,0	854,0	605,0	372,0	1,198	1000
1760 38 tubes 3 espaces	62,0	1760	750	720	13,70	23,00	1.377,0	1.060,0	756,0	470,0	1,174	1000

Les rendements élevés des corps de chauffe IRSAP répondent parfaitement aux installations basse température idéalement conçus à Δt 30°C.

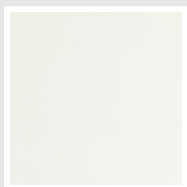
Pour des Δt différents utiliser la formule: $Q=Q_n (\Delta t / 50)^n$

Standard equipment

- système de fixation murale dans la finition du radiateur
- purgeur
- emballage intégrant une protection anti-choc et anti-rayures

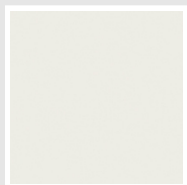
Colors and Finishes

STANDARD

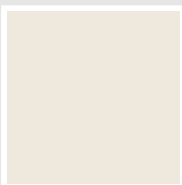


Bianco Standard
Cod. 01

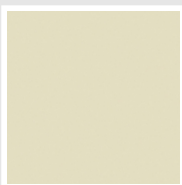
CLASSIC



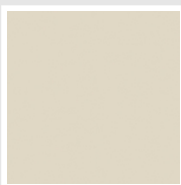
Bianco Edelweiss
Opaco
Cod. 34



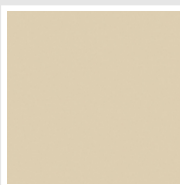
Bianco Whisper
Peach
Cod. 36



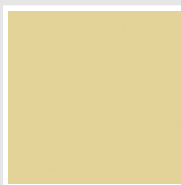
Avorio - RAL 1013
Cod. 02



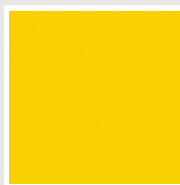
Jasmin Opaco
Cod. 35



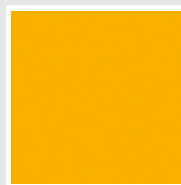
Beige Naturale
Cod. 38



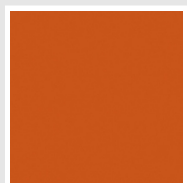
Beige Cream
Cod. 26



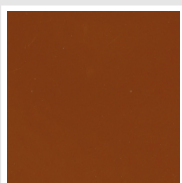
Giallo - RAL 1021
Cod. 04



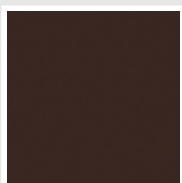
Giallo Melone - RAL
1028
Cod. E7



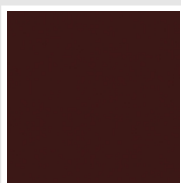
Arancio - RAL 2004
Cod. 17



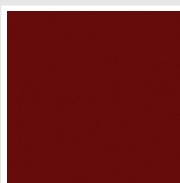
Marrone Ruggine -
RAL 8004
Cod. E1



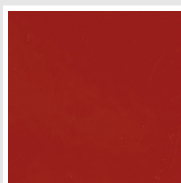
Marrone - RAL 8017
Cod. 09



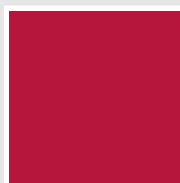
Vinaccia - RAL 3005
Cod. H9



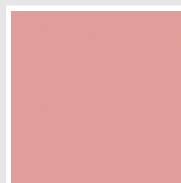
Amaranto - RAL 3003
Cod. 06



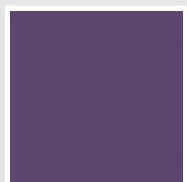
Rosso - RAL 3000
Cod. 05



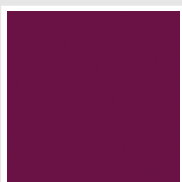
Rosso Fragola - RAL
3018
Cod. Y3



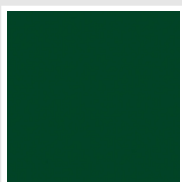
Rosa - RAL 3015
Cod. R2



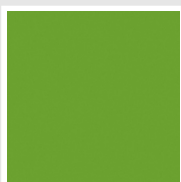
Lilla Bluastro - RAL
4005
Cod. R3



Porpora Traffico -
RAL 4006
Cod. R6



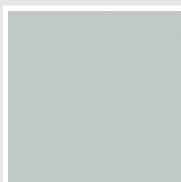
Verde Bosco - RAL
6005
Cod. 19



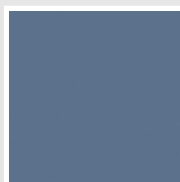
Verde Erba - RAL
6018
Cod. N3



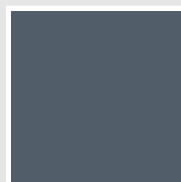
Verde Salvia - RAL
6021
Cod. E6



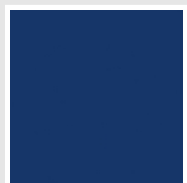
Verde Greenwich
Cod. 28



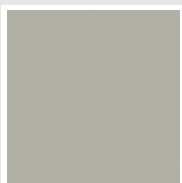
Blu Pastello - RAL
5024
Cod. G7



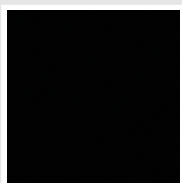
Blu Colomba - RAL
5014
Cod. G9



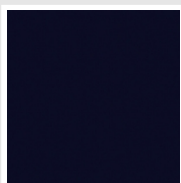
Blu Hewi
Cod. 11



Grigio Manhattan
Cod. 03

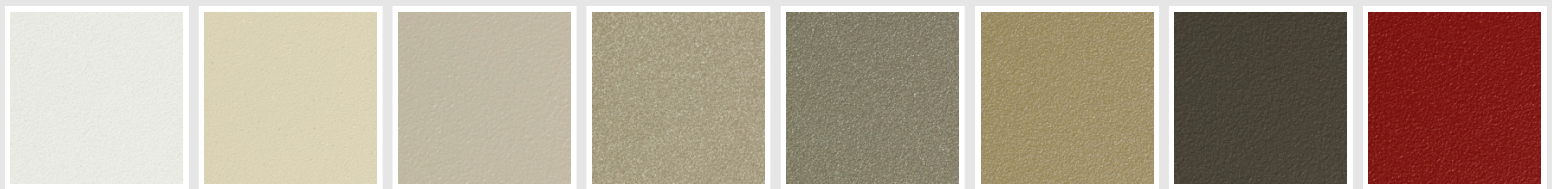


Nero - RAL 9005
Cod. 10



Deep Blue
Cod. 2F

SPECIAL



Bianco Perla
Cod. 16

Quartz 1
Cod. 1C

Sablé
Cod. Y4

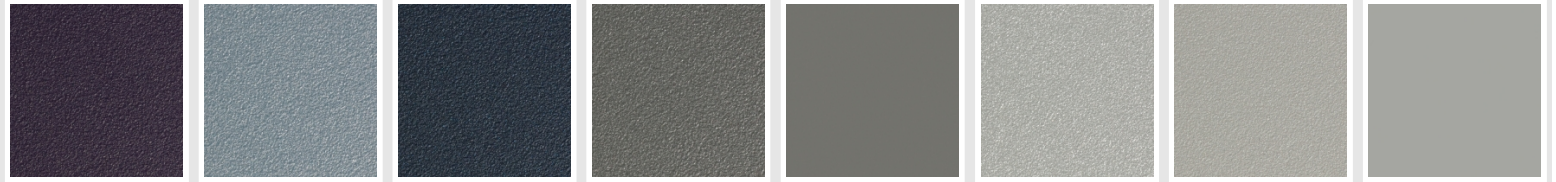
Quartz 2
Cod. 2C

Sunstone
Cod. 2D

Petra
Cod. 3D

Bruno Tabacco
Cod. 1B

Flame Red
Cod. 7D



Purple Blue
Cod. 1D

Azurite
Cod. 6D

Azurite 3
Cod. 6C

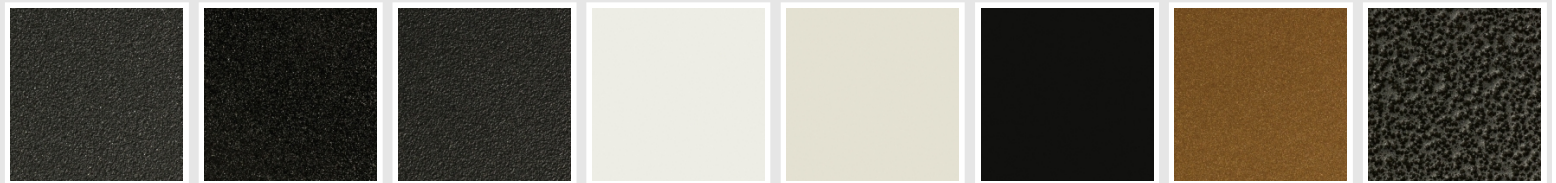
Grigio Medio
Cod. 4D

Grigio Titanio
Metallizzato - RAL
9023
Cod. L3

Grigio Silver
Cod. 5D

Grigio Perla
Cod. L6

Grigio Alluminio -
RAL 9006
Cod. B4



Nero Grafite
Cod. 18

Grigio Quarzo
Cod. 31

Nero Satinato
Cod. 30

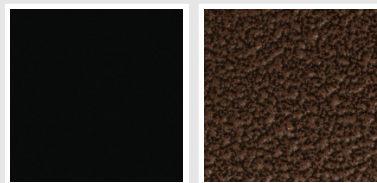
Luxury White
Cod. J7

Bianco Opaco
Cod. J8

Nero Opaco
Cod. K1

Bronzo
Cod. J9

Grigio Martellato
Cod. 32



Luxury Black
Cod. J3

Flame Martellato
Cod. J4

SURFACES



Trattamento Loft
Cod. TR

Taftah Argento
Cod. K4

Taftah Platino
Cod. K3

Taftah Oro
Cod. K2

Grey Shadow
Cod. X6

The Colors used in this folder are not considered binding. The different technological painting processes and the materials used for the realization can not have a perfect color match with the delivered product. Irsap company reserves the right to introduce at any time whatever modifications necessary to the improvement of the product.